



MONTHLY MEMBERSHIP PROGRESS REPORT

District 11 E1

Results as of: 06/30/2018

GMT: STEVE ANTON

LOCATION MICHIGAN

GMT CA

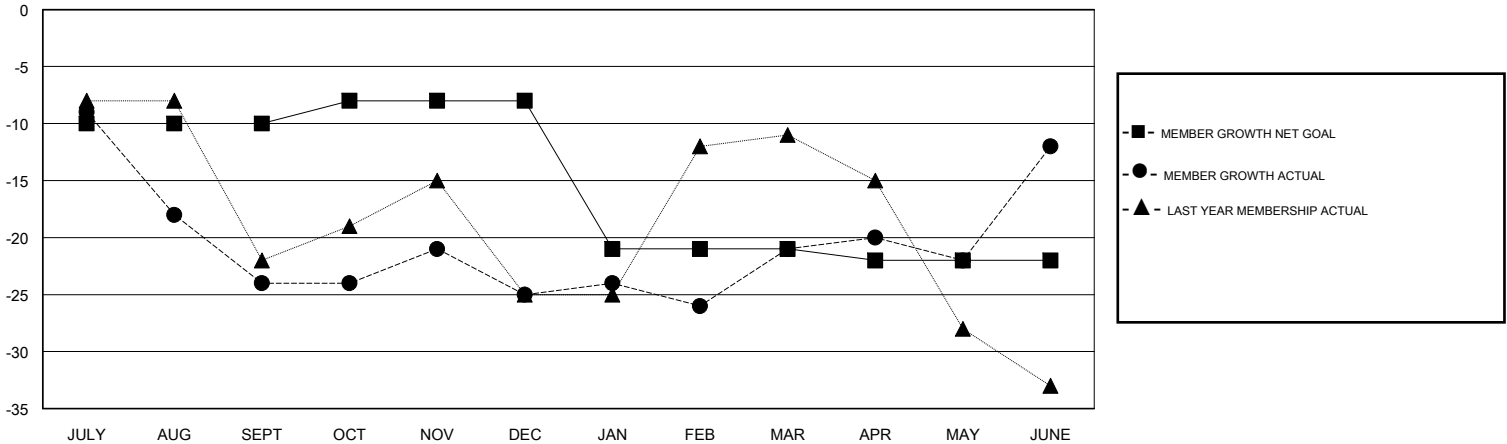
Clubs			
RESULTS FOR 2017-2018			
QUARTER	NEW CLUB GOAL	NEW CLUBS	DROPPED CLUBS
JULY/AUG/SEPT	0	0	0
OCT/NOV/DEC	1	0	0
JAN/FEB/MAR	0	0	0
APR/MAY/JUNE	0	0	0

Members			
RESULTS FOR 2017-2018			
QUARTER	MEMBER GROWTH NET GOAL	MEMBER GROWTH ACTUAL	DROPPED MEMBERS ACTUAL (including transfers)
JULY/AUG/SEPT	-10	34	54
OCT/NOV/DEC	2	23	16
JAN/FEB/MAR	-13	30	26
APR/MAY/JUNE	-1	53	41

GOALS AND ACTUAL NEW CLUBS CUMULATIVE



GOALS AND ACTUAL MEMBERS CUMULATIVE



DROPPED CLUBS: 0	31 CLUBS OF 43 ADDED 1 OR MORE NEW MEMBERS	<u>GENDER DISTRIBUTION</u>	
		MALE	737 (66.76%)
		FEMALE	367 (33.24%)
		Women Percentage Fiscal Year Goal: 31%	
<u>DROPPED MEMBERS</u>		TOTAL FAMILY UNIT MEMBERS	0
DECEASED	25	FAMILY MEMBERS PAYING HALF DUES	0
CLUB CANCELLED	0		
OTHER	112		
TOTAL	137		

[CLICK HERE FOR CUMULATIVE MEMBERSHIP DATA](#)